



# CONQUER ESSENCE

*Open-Design Micro ATX Case with Aluminum Body and Tempered Glass Covers*

The world loved the COUGAR CONQUER's CNC-milled aluminum design. Now COUGAR is releasing a smaller, more compact format for those who want to enjoy the same stunning looks within a smaller space. With support for both Micro-ATX and Mini-ITX, excellent cooling capabilities and space for high-end gaming components, this case will house the compact build of your dreams.



## Compact Splendor

CONQUER ESSENCE supports Micro-ATX and Mini ITX; if you want to build a compact and powerful gaming PC that sports a top-of-the-line design, this is the case you want.



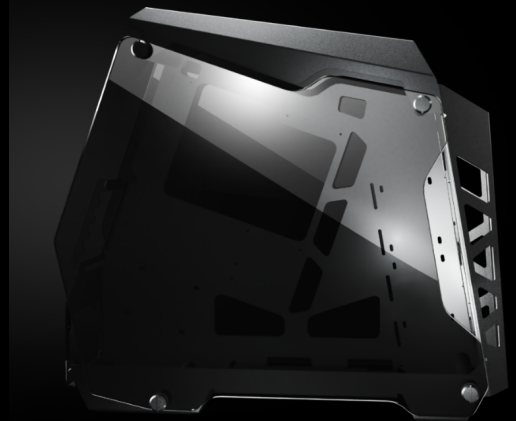
## Full Metal Body

CONQUER ESSENCE's CNC-milled aluminum body is not only a guarantee of durability; it is also a powerful design statement that remarks its military inspiration and displays the COUGAR DNA.



## Tempered Glass Covers

Two tempered glass covers provide the perfect finish to CONQUER's metal body. The high-quality feel of the glass joins its transparency to give you an unobstructed view of your case at all times.



## Powerful Cooling

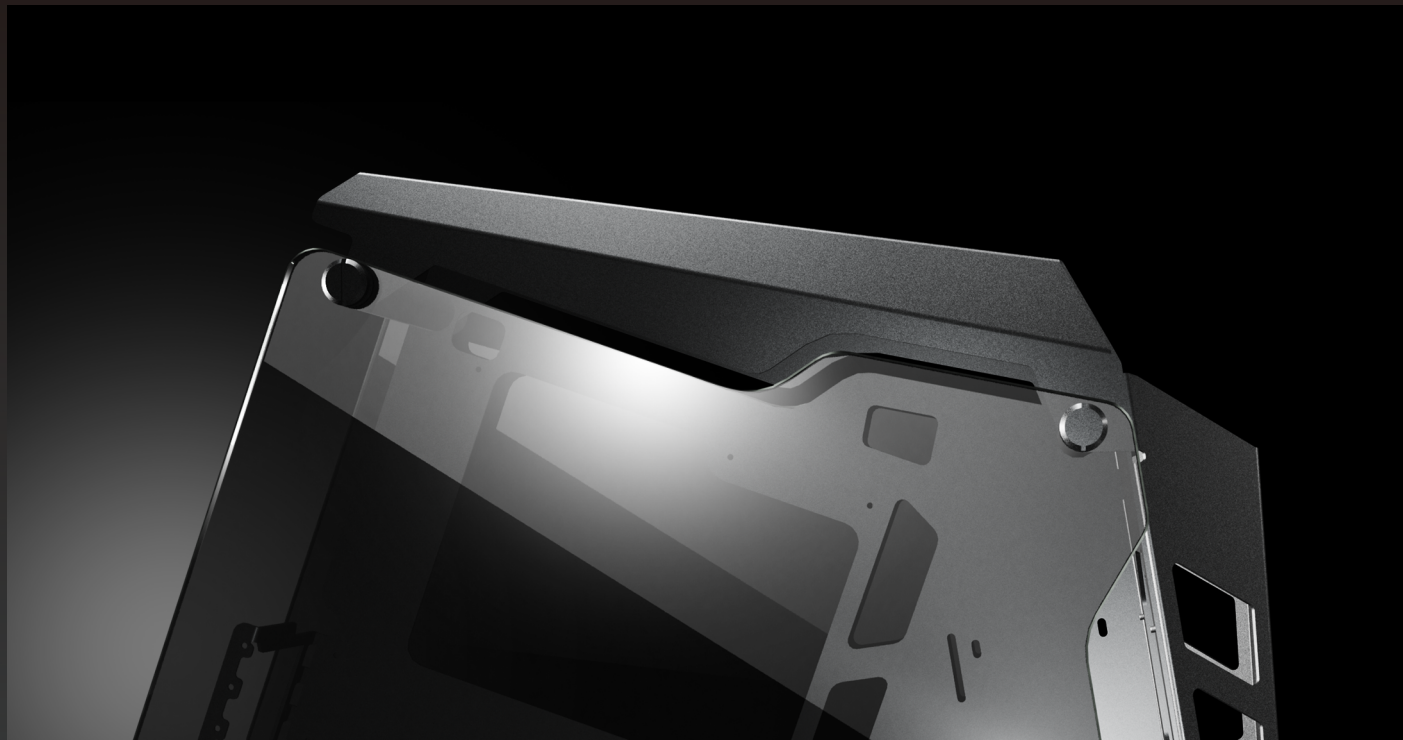
Support for four 120mm fans and two 240mm radiators (front and top) join the case's open design to guarantee perfect cooling.





# CONQUER ESSENCE

*Open-Design Micro ATX Case with  
Aluminum Body and Tempered Glass Covers*



## Specifications

Case Form Factor		Mini Tower
Case Material		Aluminum Alloy + Tempered Glass
Dimension (WxHxD)		233 x 480 x 522 (mm) 9.17 x 18.89 x 20.55 (in)
Motherboard Type		Mini ITX / Micro ATX
3.5" Drive Bay		2
2.5" Drive Bay		3+2 (converted from 3.5" drive bays)
I/O Panel		USB3.0 x 2 / Mic x 1 / Audio x 1
Cooling System	Front	120mm x 2
	Top	120mm x 2
Water Cooling Support	Front	240mm
	Top	240mm
Cable Management		Yes
Expansion Slots		5
Max. Graphics Card Length		350 (mm)
Max. CPU Cooler Height		160 (mm)
Maximum PSU Length		200 (mm)
Tempered Glass Side Panel		Both Sides 5mm Thick