

**DIGITAL
POWER**

CMD

DIGITAL POWER SUPPLY

*Extreme Performance
with Digital Control
for Professional Gamers*



EXTREME INTERACTION

Adjust all voltage levels and keep them stable under different operating conditions: Fine tune your power supply!

EXTREME ILLUSTRATION

Full Graphical and Numerical display of power consumption current status and historical database for easy analysis.

EXTREME INTEGRATION

Monitoring of all aspects of the system; complete information about your PC.

EXTREMELY HIGH EFFICIENCY

80-PLUS® Bronze certified: Provides up to 88% of efficiency. Less Cost, Less Heat, Less Problems.

LIFELONG OPERATION LOG

Helps you to review all the operating conditions in a specific operating period, including Power Efficiency, Voltage, Fan Speed and many more.

2 CASE FANS WITH ADJUSTABLE SPEED

This PSU supports (not included) up to two case fans connected to it and allows the user to adjust their speed through the COUGAR UIX software.

INSTANT SCREENSHOT FUNCTION

Conveniently and Quickly capture the on-screen information with a single click, allowing you to keep record of any specific graph that is relevant to you.

ELECTRIC CONSUMPTION COST ESTIMATION

This function allows you to estimate your computer's energy consumption and, according to the data you provide, estimate its cost.

ADVANCED MODULAR CABLE MANAGEMENT

Simplifies Cable Management, thus improving ventilation, reducing air friction and maximizing airflow.

ULTRA-QUIET & TEMPERATURE-CONTROLLED 140MM

Extremely low noise level, with fan speed automatically governed according to the PSU temperature.

DC - DC TECHNOLOGY

DC - DC technology provides the highest efficiency level, most stable performance, and most accurate regulation, always within +/- 3% of the selected voltage.

SINGLE 12V RAIL FOR STABLE OVERCLOCKING PERFORMANCE

With the Holistic Protection Mechanism, the single 12V rail arrangement will allow for high and stable overclocking performance.

Model Name	AC input	DC output					
		+3.3V	+5V	+12V1	-12V	+5Vsb	Total
CMD 500 CGR R-500	100-240Vac 50-60Hz 8-4A	24A	20A	40A	0.3A	3A	500W
		120W		480W			
CMD 600 CGR R-600	100-240Vac 50-60Hz 10-5A	24A	20A	49A	0.3A	3A	600W
		130W		588W			

Connector	Main Connector	CPU Connector	Peripheral Connector	S-ATA Connector	PCI-E Connector
Pin	24(20+4) Pins	8(4+4) Pins 8 Pins	4 Pins	5 Pins	8(6+2) Pins
CMD 500	1	1	3	5	2
CMD 600	1	1	3	6	2



The COUGAR Digital Power Supply Technology allows you to monitor power and temperature data in real time. You can also adjust many key variables of your system, providing it with more stable and economical energy.



Performance

Monitor Power Data in Real Time: Efficiency levels; output and consumption and rail voltage and current data are all easily accessible. All Voltage levels can not only be monitored but also adjusted, allowing for tight voltage regulation.



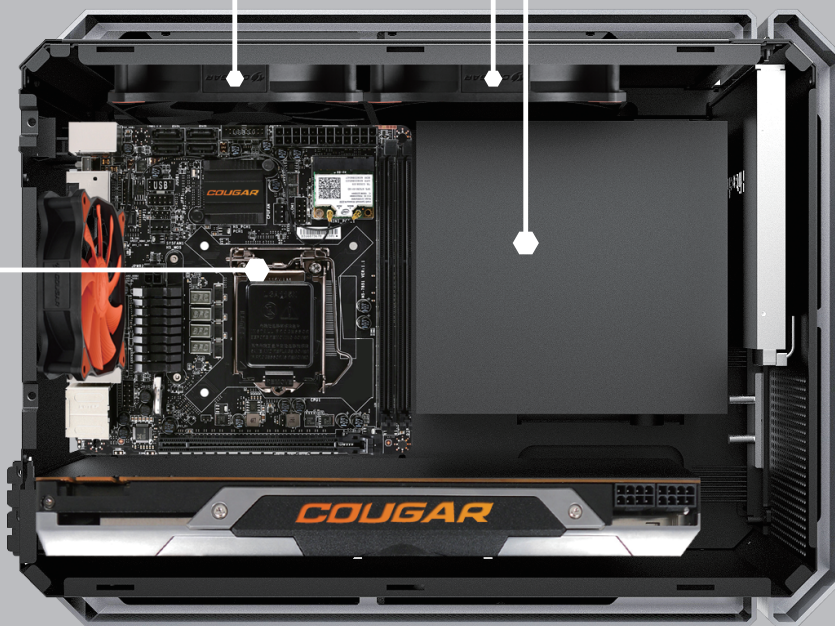
System

Visualize the temperature and usage of each PC component and control Fan speed to minimize fansound while you keep the temperature under control.



COUGAR CMDS series can control the speed of two extra case fans via the COUGAR UIX System.

With the CMD's TSR sensor you can monitor an extra location anywhere in your computer, to allow you to keep everything under total control.

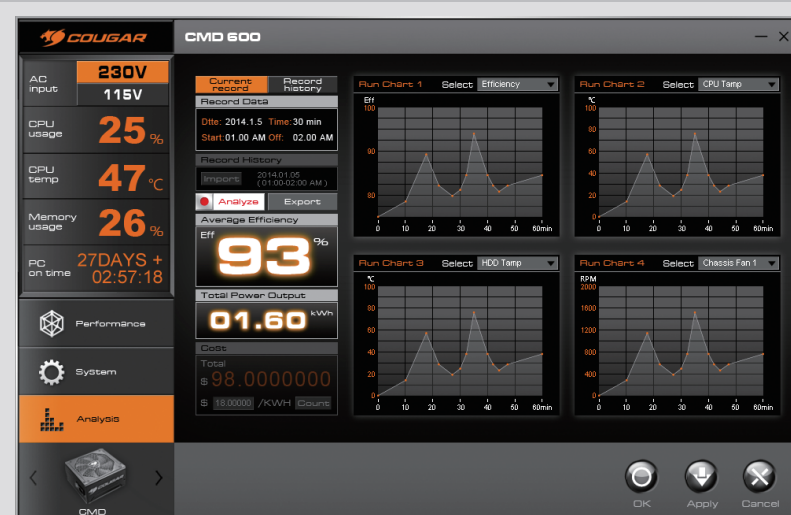


CMD

DIGITAL POWER SUPPLY

With COUGAR's new generation of power supply units, the PSU is not anymore a cold metal box. The COUGAR CMD series allows the user to interact with and configure his PSU, and use it to monitor, protect and gain extra knowledge about other components from his PC. Gamers will be able to monitor and control a broad number of variables.

The COUGAR CMD series bring you an unprecedented level of monitoring, optimization and customization.



Analysis

The COUGAR UIX System keeps lifelong records of power data in easily understandable graphs for the user to review and share.